

The Health Center Funding Cliff is Disrupting Access to Care Now

Because Congress did not extend the Community Health Centers Fund (CHCF) by **October 1st**, every Community Health Center faces drastic reductions in their federal funding at the beginning of their next budget period. With no fix, health centers face a 70% cut to this grant funding. Because the direct cuts to federal grants do not take place immediately, some policymakers are under the inaccurate impression that the cliff will not impact health centers until January.

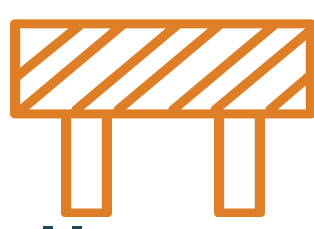
In fact, the funding cliff is already creating disruption, and funding uncertainty is forcing cutbacks and operational instability now. For example, even before October 1st, 26% of health centers report that the potential for the funding cliff had already made it harder to recruit and retain staff.*


Funding Uncertainty is Having an Immediate Impact and Forcing Hard Decisions Now

Because the Health Center Funding Cliff is not yet fixed, health centers are considering or already taking a number of actions that will have an immediate impact on their capacity to provide high-quality care to their patients.*


 **72%**
will institute a hiring freeze

 **41%**
will lay off staff

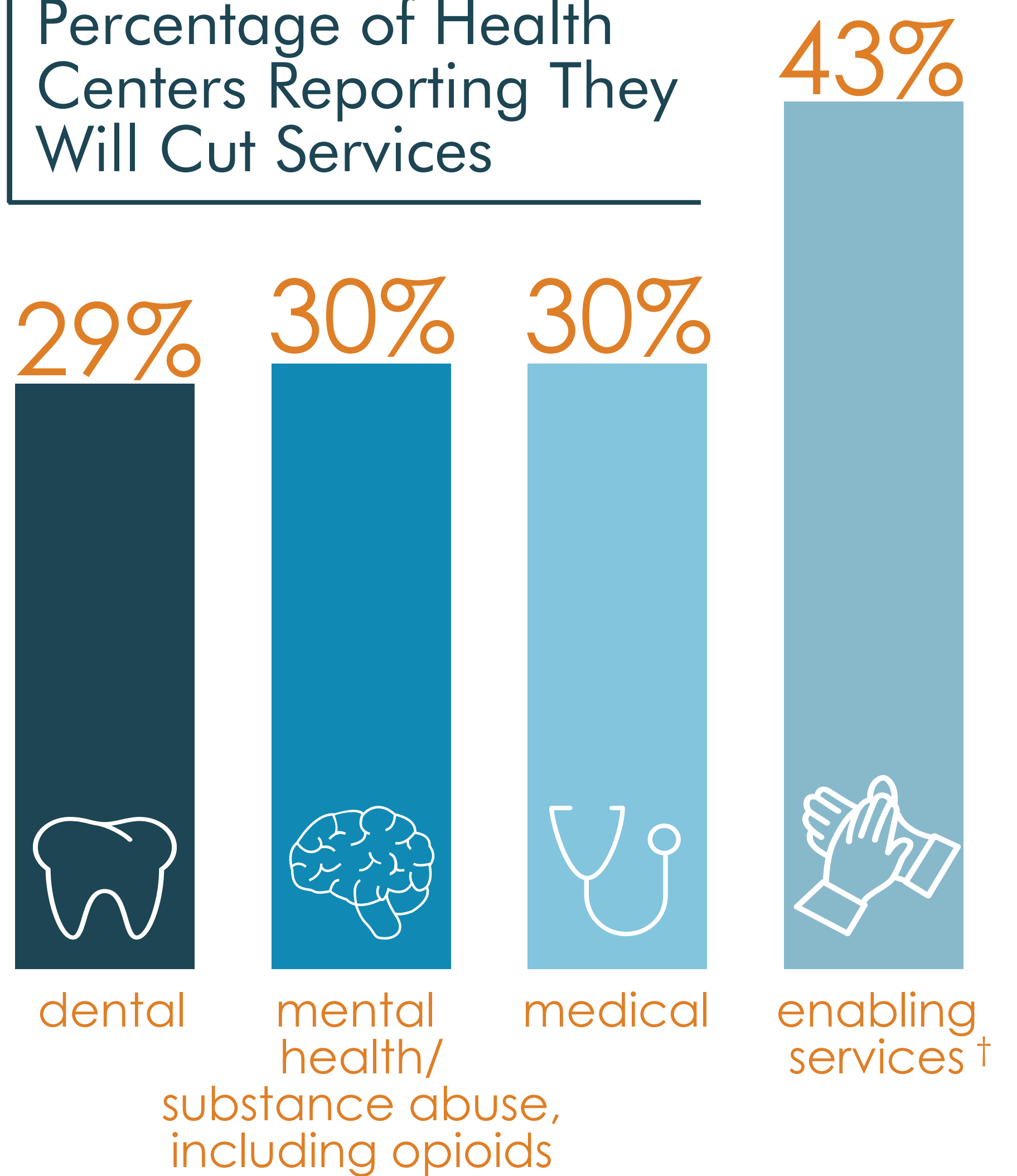
 **52%**
will cancel or delay facility renovation or expansion

 **47%**
will reduce staff hours and/or hours of operation

 **53%**
will cancel or delay performance improvement investments


 **42%**
will begin tapping into and spending down reserves

Percentage of Health Centers Reporting They Will Cut Services

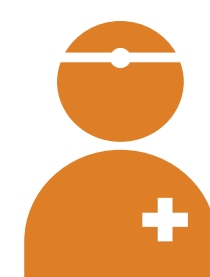


Failure to Fix the Health Center Funding Cliff Will Ultimately Lead to Critical Cuts in Access to Care

Ultimately, if the Health Center Funding Cliff is not addressed, the federal Health Resources and Services Administration (HRSA) predicts:

 **9 million**
patients will lose access to care

 **2,800**
delivery sites will be closed

 **51,000+**
providers and staff will be laid off

*Based on a national survey fielded to all federally-funded health centers on September 26, 2017. N = 518.

† Non-clinical services that improve access to care and health outcomes, such as case management, transportation, education, and translation.